

“Omgewingsbewing: Wat is die spoor wat die skool moet laat?”



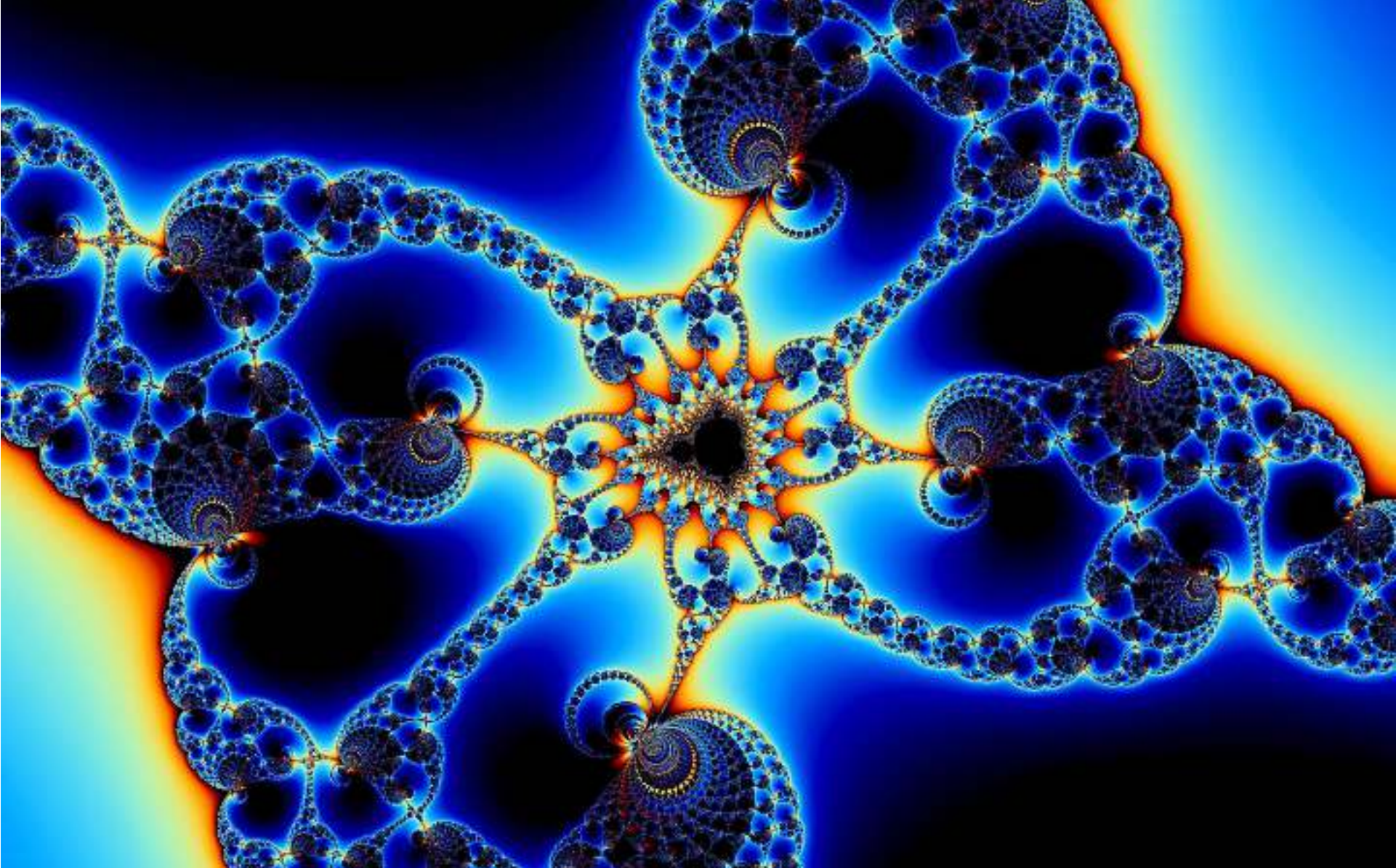
SAOU

SA ONDERWYSERSUNIE
SA TEACHERS' UNION

ON TARGET | IN DIE KOL

Dave Pepler









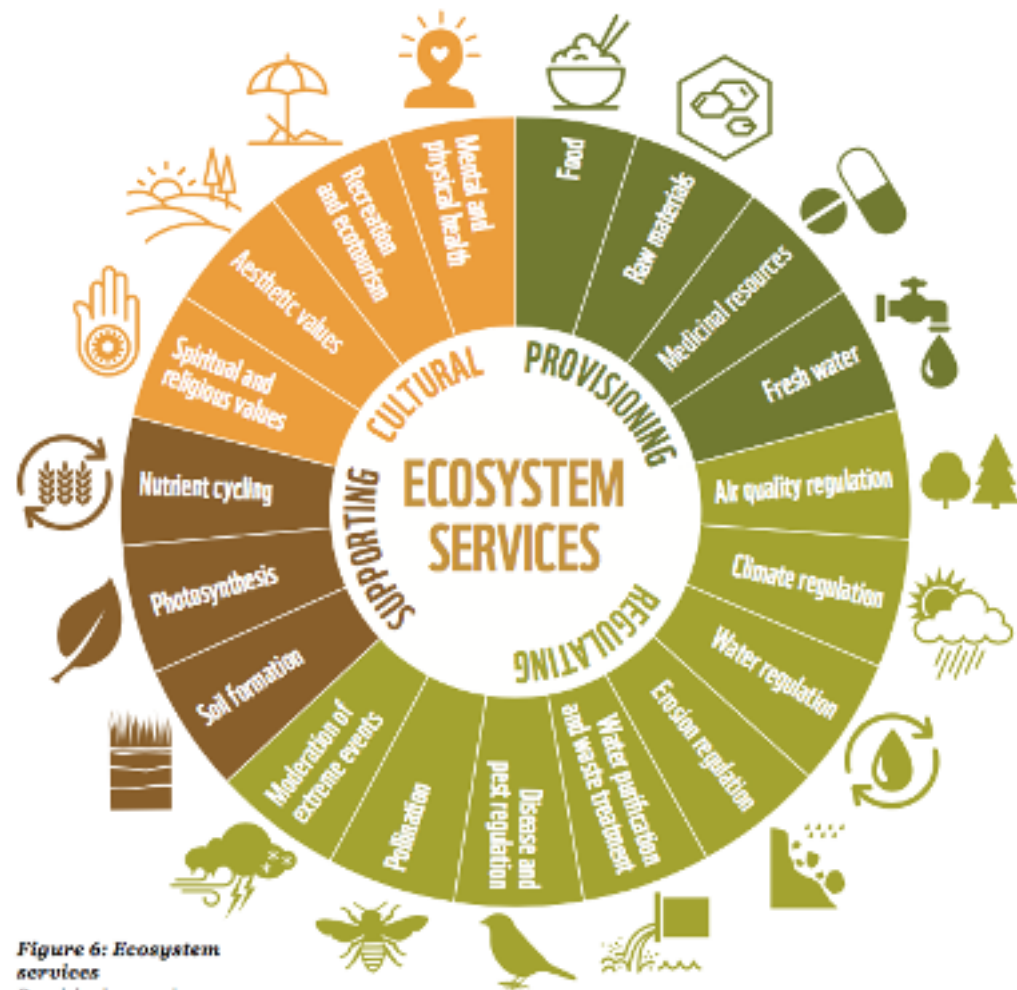
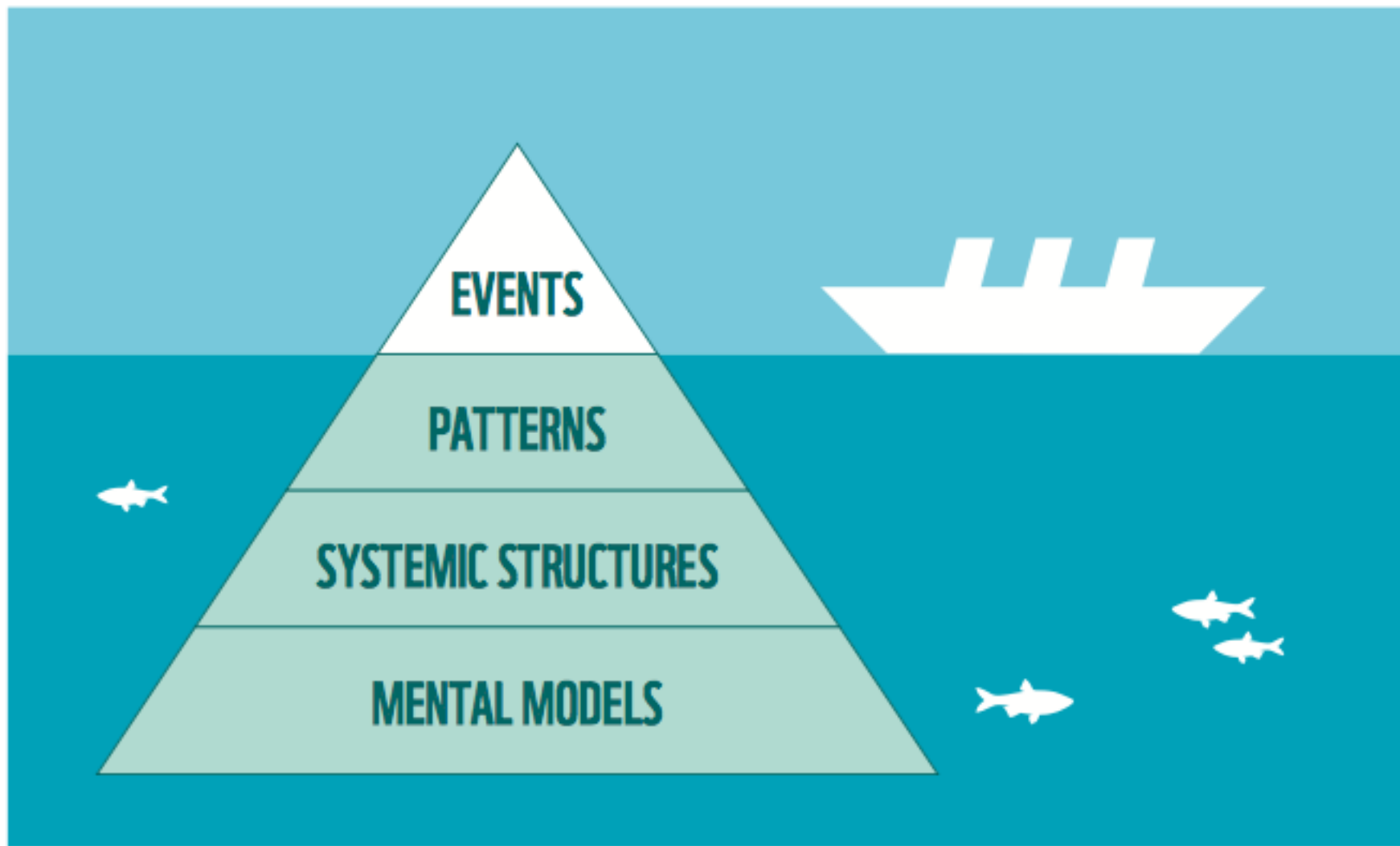


Figure 6: Ecosystem services
 Provisioning services are the products obtained from ecosystems, regulating services are the benefits obtained from the regulation of ecosystem processes, cultural services are the nonmaterial benefits people obtain from ecosystems and supporting services are those services that are necessary for the production of all other ecosystem services. Adapted from the Millennium Ecosystem Assessment, 2005.

INCREASED HUMAN PRESSURE IS DIMINISHING NATURAL CAPITAL AT A FASTER RATE THAN IT CAN BE REPLENISHED







Welcome to the Academy for Environmental Leadership SA

We equip young people who have finished school with the necessary academic and life skill tools to take the lead in environmental and leadership challenges

[Enrol now](#)

CONTACT US

Address: Uizip, Upington, Northern
Cape. -28.387792, 21.488656

Gys Botha

Phone: +27 (82) 4416 825

Email: gys@afel.ac

